

# Accessories

## Connection screw fittings, welding piece For thermometer stems and thermowells

**AV1 / AV2**  
**S1**

### Versions

#### Model AV1

#### Description

Connection screw fitting  
connection-connection (2 male threads)

#### Application

Thread adapter

#### Application Range

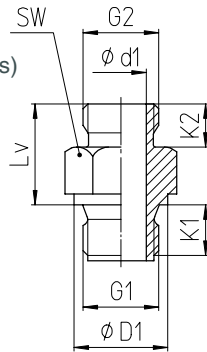
Thermometer stems A3/B3  
Thermowells with female thread N

#### Material

Stainless steel 316Ti (1.4571)

#### Options

Other materials and thread combinations upon request



#### Dimensional Data (mm/inch)

G1	G2	D1	d1	K1	K2	Lv	SW
G 1/2 B	G 1/2 B	26 1.02	14 0.55	14 0.55	12 0.47	28 1.1	27 1.06
G 3/4 B	G 1/2 B	32 1.26	14 0.55	16 0.63	12 0.47	28 1.1	32 1.26
	G 3/4 B			14 0.55			
1/2" NPT	G 1/2 B	-	14 0.55	19 0.75	12 0.47	28 1.1	27 1.06
3/4" NPT	G 1/2 B	-	14 0.55	19 0.75	12 0.47	28 1.1	27 1.06
M20x1.5	M20x1.5 B	25 0.98	14 0.55	14 0.55	12 0.47	28 1.1	27 1.06
M24x1.5	M20x1.5 B	29 1.14	14 0.55	14 0.55	12 0.47	28 1.1	32 1.26
M27x2	M20x1.5 B	32 1.26	14 0.55	16 0.63	12 0.47	28 1.1	32 1.26

Ordering information: AV1, G1 = G 3/4 B, G2 = G 1/2 B, 1.4571

#### Model AV2

#### Description

Connection screw fitting  
bushing-connection (female/male thread)

#### Application

Thread adapter

#### Application Range

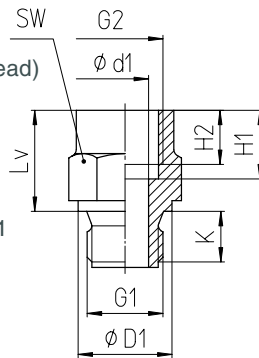
Thermometer stems A4/B4, A4.1/B4.1

#### Material

Stainless steel 316Ti (1.4571)

#### Options

Other materials and thread combinations upon request



#### Dimensional Data (mm/inch)

G1	G2	D1	d1	H1	H2	K1	Lv	SW
G 1/2 B	G 1/2	26 1.02	14 0.55	15 0.59	19 0.75	14 0.55	28 1.1	27 1.06
G 3/4 B	G 1/2	32 1.26	14 0.55	15 0.59	19 0.75	16 0.63	28 1.1	32 1.26
	G 3/4			22 0.87	17 0.67			
1/2" NPT	G 1/2	-	14 0.55	15 0.59	19 0.75	19 0.75	28 1.1	27 1.06
3/4" NPT	G 1/2	-	14 0.55	15 0.59	19 0.75	19 0.75	28 1.1	27 1.06
M20x1.5	M20x1.5	25 0.98	14 0.55	15 0.59	19 0.75	14 0.55	28 1.1	27 1.06
M24x1.5	M20x1.5	29 1.14	14 0.55	15 0.59	19 0.75	14 0.55	28 1.1	32 1.26
M27x2	M20x1.5	32 1.26	14 0.55	15 0.59	19 0.75	16 0.63	28 1.1	32 1.26

Ordering information: AV2, G1 = G 3/4 B, G2 = G 1/2, 1.4571

#### Model S1

#### Description

Welding piece with female thread  
for thermometer stems and thermowells

#### Application

Process connection

#### Application Range

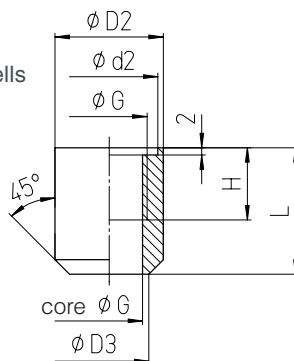
Thermometer stems A4.1/B4.1  
Thermowells for screwing-in,  
e.g. SF5, SF6, SF7, SF8, SF9

#### Material

Stainless steel 316Ti (1.4571)

#### Options

Other materials and threads upon request



#### Dimensional Data (mm/inch)

G	D2	d2	D3	L	H
G 1/2	30 1.18	27 1.06	22 0.87	35 1.38	20 0.79
M20x1.5	30 1.18	27 1.06	22 0.87	35 1.38	20 0.79
	38 1.5	33 1.3	28 1.1	50 1.97	20 0.79
M27x2	38 1.5	33 1.3	28 1.1	50 1.97	20 0.79

Ordering information: S1, G = G 3/4, 1.4571