

Diaphragm Seal

Special chemical seal
For pulp and paper industries, DN 48, PN 40

MDM 7590

Information on applications, features, metrological influences such as temperature, level difference, floating time, etc., can be found in model overview 7000. Furthermore, you will find information on other chemical seal versions.

Application

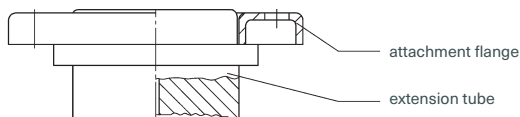
Diaphragm seal models MDM 7590 are mainly used in the pulp and paper industry.

Bourdon tube pressure gauges, pressure switches, pressure transmitters and other pressure measuring instruments up to PN 40 can be equipped with this chemical seal.

Construction

Model 7590vd8 has an orifice d8 as instrument connection for welding to a pressure gauge with process connection d8x5, e.g. RCh 100 – 3vDW, a cooling element or a capillary line.

Leakage cannot occur at the welded connection of pressure gauge / upper part and the filling port that is not accessible externally. The parts can be easily cleaned externally.



Standard Versions

Process Connection

DN 48, extension tube length TuL 15 mm (0.59")

Body (including extension tube)

Stainless steel 316L

Diaphragm

Stainless steel 316L, flush welded to the body
Effective diaphragm diameter dM = 38 mm (1.5")

Attachment Flange

Stainless steel moulding, 6 holes \varnothing 7 mm (0.28"),
hole circle \varnothing 70 mm (2.76")

Nominal Pressure

PN 40

Instrument Connection

d8

Filling Liquid

Silicone oil (FA1)

Pressure Ranges Measuring Instrument

Pressure gauge NCS 100 (4"): 0 – 1.6 bar to 0 – 40 bar,
also corresponding compound ranges
Pressure ranges for other pressure measuring instruments upon request

Reference Temperature

+20 °C (+68 °F), dial inscription pressure gauge: t_A +20 °C

¹⁾ information only required for chemical seals supplied unmounted



Options

- Instrument connection female thread G 1/2, G 1/4, 1/4" NPT, 1/2" NPT
- Extension tube length 6.5 mm (0.26")
- Quadrant pipe 90° or quadrant pipe 90° with vibration damper, only for pressure gauges NCS \leq 100 (4"), cf. drawings on page 2
- Counter flange for welding, solid version or with pipe welding socket (cf. page 2)
- Other filling fluid, according to the medium requirement
- Working temperature deviating from +20 °C (+68 °F) (Please specify precise operating conditions!)
- Capillary line (max. length upon request) or cooling element between chemical seal and measuring instrument, see data sheets 7.7002 and 7.7003, strongly recommended for medium temperatures > +100 °C (+212 °F)

Special Versions Upon Request

- Other instrument connections
- Other counter flanges
- Version with custom dimensions
- Special materials

Ordering Information Chemical Seal

Please regard our detailed ordering information

- in model overview 7000
- in the checklists for pressure measuring instruments with chemical seal
- in the data sheet of the required pressure measuring instrument and add the information for the respective chemical seal

Model	MDM 7590
Process connection	DN 48
Nominal pressure	PN 40
Extension tube length TuL	15 mm or 6.5 mm
Material chemical seal	stainless steel 316L
Instrument connection¹⁾	d8
Specifics	see above

Please indicate in particular if the medium or ambient temperature deviates from +20 °C (+68 °F) as well as any special process or cleaning conditions.

Example

**MDM 7590, DN 48, PN 40,
TuL 15 mm, stainless steel 316L,
instrument connection d8**

ARMANO

ARMANO Messtechnik GmbH

Location Beierfeld
Am GewerbePark 9 • 08344 Grünhain-Beierfeld
Tel.: +49 3774 58 – 0 • Fax: +49 3774 58 – 545
mail@armano-beierfeld.com

Location Wesel
Manometerstraße 5 • 46487 Wesel-Ginderich
Tel.: +49 2803 9130 – 0 • Fax: +49 2803 1035
mail@armano-wesel.com

www.armano-messtechnik.com

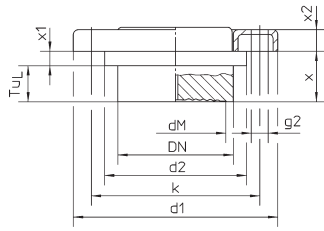
7590

12/22

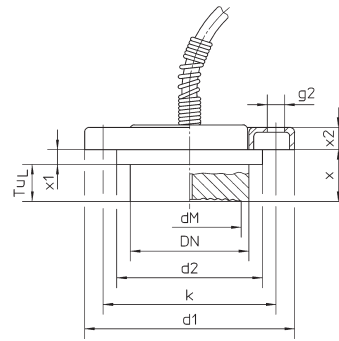
Dimensional Drawing, Dimensional Data and Weight

Connections

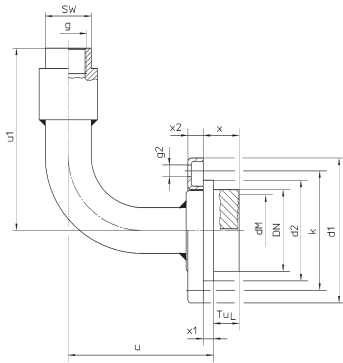
Direct mounting d8



Mounting with capillary line (optional)

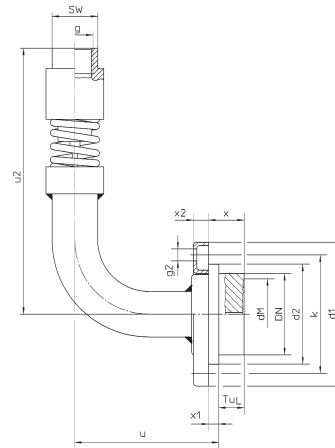


90° quadrant pipe (optional)



90° quadrant pipe with vibration damper (optional)

(only for pressure measuring instruments NCS ≤ 100 (4"))

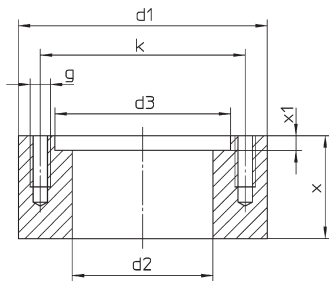


Dimensional Data (mm / inch) and Weight (kg / lb)

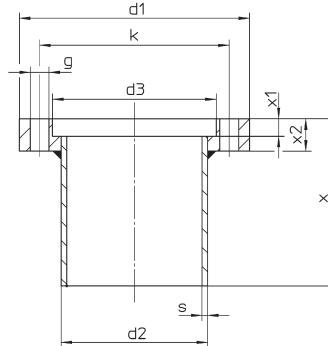
extension tube length TuL	DN	b ^{±2}	d1	d2	dM	g	g2	k ^{±2}	u ^{±1}	u1 ^{±1}	u2 ^{±1}	x	x1	x2	SW	approx. weight ¹⁾							
15 mm 0.59"	48	2.6	85	59	38	G 1/2	6 x Ø 7 6 x Ø 0.28	70	81	107	157	21	6	9	27	0.72							
6.5 mm 0.26"	1.89	57.5	3.35	2.32	1.5							2.76				3.19	4.21	6.18	12.5	0.24	0.35	1.06	0.40
		2.26																			0.49		

Counter Flanges for Welding

Solid version



Version with pipe welding socket



Dimensional Data (mm / inch) and Weight (kg / lb)

version	d1	d2	d3	g	g2	k	s	x	x1	x2	approx. weight
solid	85	48.5	59.5	6 x M6	-	70	-	35	5	-	1.00
	3.35	1.91	2.34		2.76		1.38	0.2	2.20		
with pipe welding socket		54	60.4	-	6 x Ø 7 6 x Ø 0.28		2	55	7	12	0.40
		2.13	2.38				0.08	2.17	0.28	0.47	0.88

¹⁾ standard version, direct mounting