

Capsule Gauge for Low Pressure

Crimped-on ring case stainless steel

KPChg

50 – 1

Standard Versions

Information on general and metrological features (e.g. load limits/temperature resistance) and standard pressure ranges/scale divisions can be found in model overview 6000.

Accuracy (DIN EN 837-3)

Class 1.6

Case

With polished crimped-on ring, stainless steel 304 (1.4301)

Degree of Protection (DIN EN 60 529/IEC 529)

IP44 for bottom connection

IP54 for back connection

Nominal Case Size

50 mm (2")

Wetted Parts

Connection	brass
Diaphragm capsule	CuBe alloy
O-ring sealing	NBR

Case Configuration

Connection	screwed
Position of the connection	- bottom connection - centre back connection (rm)
Mounting device	- without - front flange for panel mounting (Fr) - u-clamp for panel mounting (BFr)

Pressure Ranges (DIN EN 837-3)

0 – 100 mbar to 0 – 600 mbar

(0 – 40 inH₂O to 0 – 250 inH₂O)

Process Connection

G ¼ B (¼" BSP)

Window

Polycarbonate (with punched hole for zero adjustment)

Movement

Brass/German silver

Dial

Aluminum white, scale black

Pointer

Aluminum black

Zero Adjustment

On the front side



Ordering Information, Standard Pressure Ranges, Options

See pages 3 and 4

Further Options

- Position of connection radial at 3 o'clock, 9 o'clock, 12 o'clock
- GOST version for Russia and Kazakhstan

Special Versions Upon Request

- Other process connections
- Other pressure ranges and/or special scales, e.g. dual scale mbar/kPa, coloured fields or ranges, dial inscriptions, negative scale
- Case parts 316L (1.4404)
- Other position of connection

Accessories

See catalogue heading 11

www.armano-messtechnik.com

ARMANO

ARMANO Messtechnik GmbH

Location Beierfeld

Am Gewerbepark 9 • 08344 Grünhain-Beierfeld
Tel.: +49 3774 58 – 0 • Fax: +49 3774 58 – 545
mail@armano-beierfeld.com

Location Wesel

Manometerstraße 5 • 46487 Wesel-Ginderich
Tel.: +49 2803 9130 – 0 • Fax: +49 2803 1035
mail@armano-wesel.com

6232

03/22

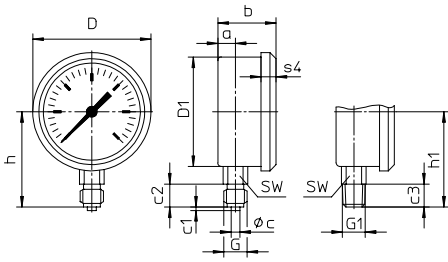
Case Configurations, Code Letters, Dimensional Data and Weight

Bottom Connection

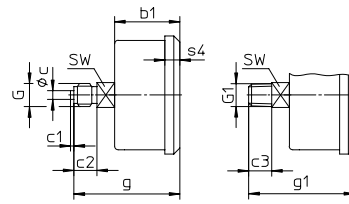
Centre Back Connection

without mounting device

without code letters

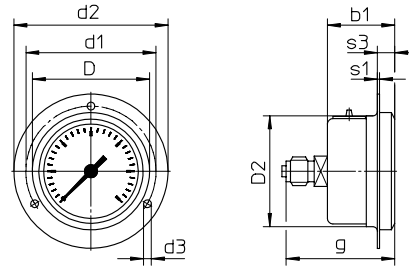


code letters **rm**



with front flange for panel mounting

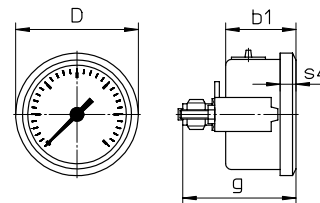
code letters **rmFr**



recommended panel cut out $\varnothing 54 \pm 0.3$ mm (2.13 \pm 0.01")

with u-clamp for panel mounting

code letters **rmBFr**



recommended panel cut out $\varnothing 51 \pm 0.3$ mm (2.01 \pm 0.01")

Dimensional Data (mm/inch) and Weight (kg/lb)

NCS	a	b	b1	c	c1	c2	c3	D	D1	D2	d1	d2	d3	G	G1	g	g1	h ^{±1}	h1 ^{±1}
50 2"	10 0.39	36 1.42	31 1.22	5 0.2	2 0.08	13 0.51	13 0.51	54 2.13	48.5 1.91	51 2.01	60 2.36	71 2.8	3.6 0.14	G 1/4 B M12x1.5	1/4" NPT	54 2.13	54 2.13	45 1.77	45 1.77

s1	s3	s4	SW	approx. weight ¹⁾
1 0.04	8 0.31	7 0.28	14 0.55	0.12 0.26

¹⁾ data for version without mounting device

Ordering Information

Basic Model		Capsule Gauge for Low Pressure with Crimped-on Ring Case				KPChg	
Case filling	without				without code letters		
Nominal case size	case Ø 50 mm (2")				50		
Wetted material	copper alloy				- 1		
Case configuration	case/connection	screwed			without code letters		
	position of the connection	bottom connection			without code letters		
		centre back connection			rm		
	mounting device	without			without code letters		
front flange for panel mounting			Fr				
u-clamp for panel mounting			BFr				
Pressure ranges	mbar			inH ₂ O			
	vacuum	compound	pressure	vacuum	compound	pressure	
	-100 / 0	-40 / +60 -60 / +40	0 - 100	-40 / 0	-15 / +25 -25 / +15	0 - 40	
	-160 / 0	-60 / +100 -100 / +60	0 - 160	-60 / 0	-20 / +40 -40 / +20	0 - 60	e.g. 0 - 160 mbar
	-250 / 0	-100 / +150 -150 / +100	0 - 250	-100 / 0	-40 / +60 -60 / +40	0 - 100	
	-400 / 0	-150 / +250 -250 / +150	0 - 400	-160 / 0	-60 / +100 -100 / +60	0 - 160	
	-600 / 0	-200 / +400 -400 / +200	0 - 600	-250 / 0	-100 / +150 -150 / +100	0 - 250	
	Process connection	standard thread	G ¼ B			G ¼ B	
options		¼" NPT			¼" NPT		
		M 12x1.5			M 12x1.5		
		G ½ B			G ½ B		
		⅜" NPT			⅜" NPT		
		M 10x1			M 10x1		
Options	see page 4						

Example

KPChg 50 - 1, 0 - 160 mbar, G ¼ B

